

**INTERGAS®**

XCLUSIVE



# XCLUSIVE

SMART CHOICE FOR  
HEATING AND HOT WATER

**INTERGAS®**  
BOILERS



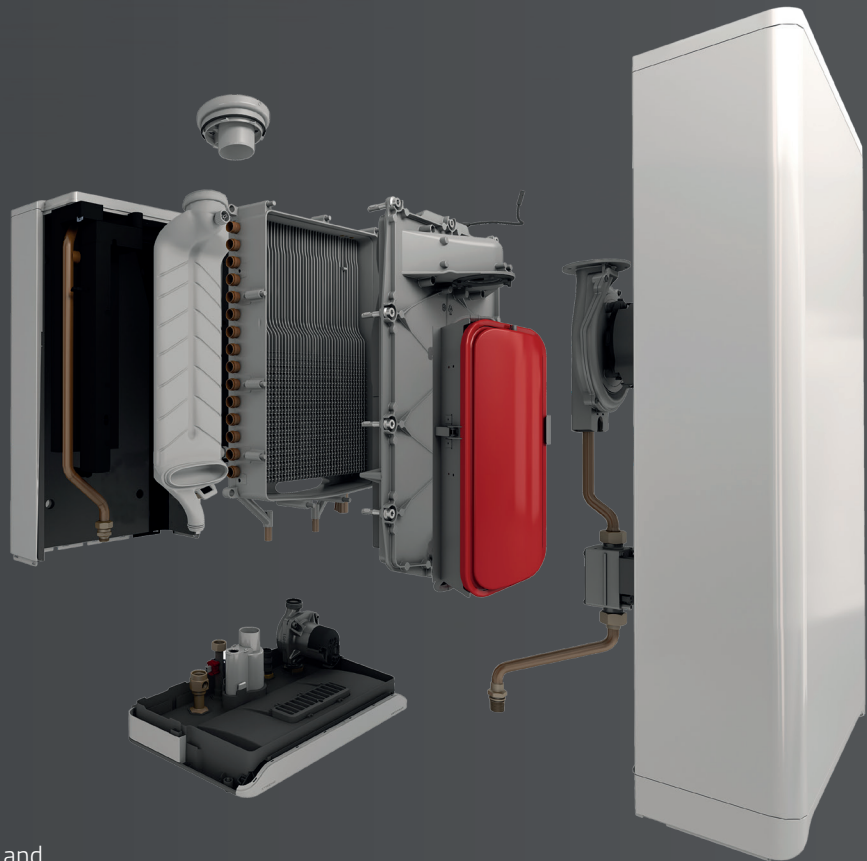
**CUTTING-EDGE  
EFFICIENCY**



## Xclusive design, unrivalled performance

For over 25 years Intergas has been leading the field with its range of reliable, high-efficiency Combi Compact boilers and its latest addition, the Xclusive, is not only even more energy-efficient, reducing both energy bills and CO<sub>2</sub> emissions, it also has an exceptional flow rate and is packed with new user-friendly features.

Within its sleek casing is an illuminated touchscreen display panel with easy-to-read-and-use icons, an integral expansion vessel, a combined PRV and condensate connection, an integral filling loop and dual OpenTherm inputs, which make this boiler a dream to maintain and service. The RF module comes fitted as standard, which means the installer can monitor all aspects of boiler performance remotely, and you can control your central heating on the go.



## Less parts, more reliability

The Xclusive only has four moving parts and, with fewer parts, there's less to go wrong.

# XCLUSIVE





## Key features

- > Integral expansion vessel
- > Central flue
- > Easy-to-use touchscreen panel
- > RF module for remote access and control
- > Boiler modulation range 1:9 in both heating and hot water modes (3.5-36.3 kW)
- > Combined PRV and condensate connection
- > Dual OpenTherm inputs
- > Exceptional flow rate of 11 -13.5 l/min
- > Ten-year parts and labour warranty



CUTTING-EDGE  
INNOVATION

The build quality is as robust as ever, there are only three plastic components\* and 90% of this boiler is fully recyclable.

\*Ignition module, pressure sensor and internal flue

ON

## Game-changing heat exchanger

Our revolutionary two-in-one aluminium heat exchanger remains at the heart of this boiler. Thanks to its intelligent design, there's no need for a diverter valve, valve motor, auto air vent or secondary hot water plate heat exchanger, so all the parts that tend to stick, leak or let you down aren't there. Optimum heat transfer is guaranteed, as the central heating water and cold tap water flow directly through the heat exchanger, and heat loss is kept to a minimum, which means this boiler isn't only ultra-reliable, it's highly energy efficient too.

# Comfort at a touch

All Xclusive boilers come fitted with an RF module as standard. This allows you to integrate the boiler with either the Comfort Touch wired thermostat or the Honeywell wireless thermostat, to further improve the energy efficiency of your central heating system.

When integrated with Comfort Touch, the Xclusive is Boiler Plus-ready. (Boiler Plus is part of the government's Clean Growth Strategy to improve the efficiency of heating systems, particularly through the installation of additional controls.)



BOILER PLUS



## The app for fingertip control Anytime, anywhere

Remotely adjusting room temperature and programming weekly schedules are just a few of the great customer features of our free Comfort Touch app, which turns your smartphone into a smart thermostat. For installers, the app provides unprecedented access to the boiler's operation, in real time, and enables parameter settings to be changed to improve performance and head off a problem before it becomes one.

## COMFORT TOUCH THERMOSTAT

Comfort Touch is easy-to-use, thanks to its tactile touchscreen display; just tap plus (+) or minus (-) to adjust the room temperature. If you'd rather not display the temperature, simply alter its settings to 'ON/OFF' and 'Standby' modes only. A sleek and subtle design, this thermostat blends right in. Available in black and white.





## Technical specifications

XCLUSIVE	24	30	36
----------	----	----	----

Boiler category		C13; C33; C53		
Gas inlet pressure		G20: 20 mbar, G31: 37 mbar		
Suitable for gas		I12H3P		
<b>Domestic hot water</b>				
Nom. load upper value	kW	4.0 - 27.8	4.0 - 33.8	4.0 - 36.3
Nom. load lower value	kW	3.6 - 25.1	3.6 - 30.5	3.6 - 32.7
Tap threshold	l/min	2	2	2
$\Delta T$ 25 °C	l/min	13.5	16.5	19
$\Delta T$ 35 °C	l/min	11.0	12.5	13.5
Domestic hot water temperature (default)	°C	55	55	55
Effective boiler wait time	sec	< 1	< 1	< 1
Load profile		XL	XL	XL
Energy efficiency rating class		A	A	A
<b>Central heating</b>				
Nom. load upper value	kW	4.0 - 20.7	4.0 - 26.3	4.0 - 36.3
Nom. load lower value	kW	3.6 - 18.7	3.6 - 23.7	3.6 - 27.0
Nom. output	kW	4.0 - 18.2	4.0 - 23.1	4.0 - 26.6
Max. central heating water pressure	bar	3	3	3
Max. central heating water temperature	°C	90	90	90
Energy efficiency rating class		A	A	A
<b>Other data</b>				
Gas consumption (G20)	m <sup>3</sup> /h	0.38 - 2.66	0.38 - 3.23	0.38 - 3.46
Gas consumption (G31)	m <sup>3</sup> /h	0.15 - 1.03	0.15 - 1.25	0.15 - 1.34
Avg. flue temperature DHW	°C	35	35	35
Flue massflow	kg/h	5.9 - 41.6	5.9 - 50.5	5.9 - 54.1
Maximum counterpressure	Pa	250	250	250
Seasonal space heating efficiency	%	92	92	92
Water heating energy efficiency	%	87	89	89
<b>Electric data</b>				
Mains voltage V 230	V	230	230	230
Safety class IP IPX4D	IP	IPX4D	IPX4D	IPX4D
Recorded output: full load W 115	W	115	115	115
Recorded output: standby W 2	W	2	2	2
<b>Overall dimensions and weight</b>				
Height	mm	766	766	826
Width	mm	450	450	450
Depth	mm	277	277	277
Weight	kg	39.5	39.5	42.5



Technical specifications subject to change.

# XCLUSIVE

## **Intergas Heating Ltd**

Unit 2 Easter Park                    t 01527 888000  
Worcester Road                      f 01384 279480  
Kidderminster                        e info@intergasheating.co.uk  
Worcestershire                       i www.intergasheating.co.uk  
DY11 7AR

**[WWW.INTERGASHEATING.CO.UK](http://WWW.INTERGASHEATING.CO.UK)**

The information in this brochure was correct at the time of going to print. Intergas Heating reserves the right to make any modifications to product specifications or any other details, without prior notification. For further clarification, please enquire in writing to the head office address above.

**INTERGAS®**  
BOILERS